

# Unparalleled connectivity to enhance your workflow

## Powerful Performance, Exceptional Versatility

With an impressive array of standard features, the AR-M280N Imager delivers enhanced productivity to even the busiest workgroups. With print speeds of 28 pages per minute and crisp 600 dpi resolution (1200 dpi equivalent), this high-performance printer/copier gets the job done. Fully networkable, out of the box, the AR-M280N Imager can connect people, combine functions, and manage information in ways never before possible. A true multi-tasker, it can even perform two different functions at the same time, such as faxing while copying—to increase your efficiency. The innovative ImageSEND feature integrates scanning and faxing into one convenient function, and allows users to instantly scan and send a document to multiple destinations—with the touch of a few buttons.

## A Powerful Blend of Features, Functionality and Flexibility

### Efficient 28 ppm Network Printing (standard)

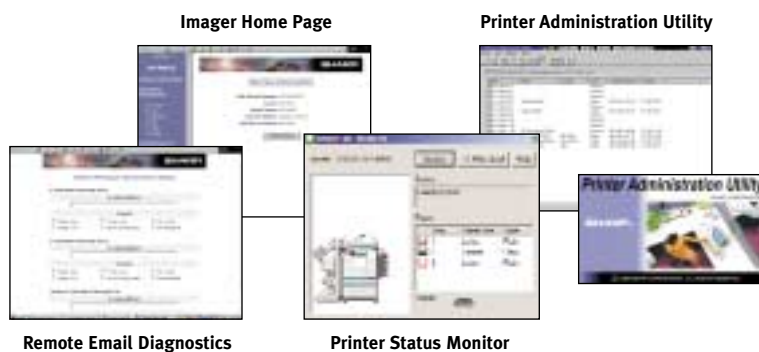
- Job Retention functions\* (hold/sample/confidential) allow you to control printout from the control panel
- 600 dpi and 1200 dpi equivalent resolution with smoothing technology
- Compatible with PCL5e/6 (standard) and PostScript Level 3 (option)
- Large 3100-sheet paper capacity with options
- Handles special print media including OH transparencies, heavy stock and envelopes
- Various image editing functions: B&W Reverse, Mirror Image, Watermarks, Fit to Page, etc.
- Super Photo mode
- Status Monitor lets you monitor printer activities

\* Requires optional hard disk drive

### Productive 28 cpm Copying (standard)

- Duplex Single-Pass Feeder for fast, efficient two-sided copying
- 25 to 400% in 1% increments
- Various image editing functions: Margin Shift, Edge/Center Erase, Dual Page Copy, Multi-shot, etc.
- Convenient automated features including auto paper selection, auto magnification selection and auto tray switching
- Trayless duplex copying (optional)

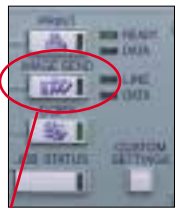
### AR-M280N Digital Imager Printing Capabilities



A true multi-tasker, the AR-M280N Imager is flexible enough to perform entirely different functions—simultaneously.

**SHARP**®

Digital  
**IMAGER**™  
Advanced Workgroup System

**AR-M280N****Optional Network Scanning Capabilities**

ImageSEND

**Network Scanning with ImageSEND**

- ImageSEND enables users to scan and fax documents right from the touch-screen LCD panel to six different destinations: Send to Desktop, Send to E-mail, Send to FTP, Send to Group, Send to Fax, Send to i-Fax
- Sharpdesk™ software for easy document management and image editing



**Send to Desktop** allows users to send scanned files directly to their desktop computers and store them in their favorite file formats.



**Send to E-mail** saves time and allows users to send scanned images directly to any e-mail address.



**Send to FTP** enables direct scanning to an FTP file server for special applications.



**Send to Group** allows users to send the same document to multiple E-mail, fax and internet fax destinations—simultaneously.



**Send to Fax** enables users to scan and fax right from the control panel. (requires optional fax installation)



**Send to I-Fax** enables users to send documents worldwide to another T-37 Internet fax machine at virtually no cost—and in considerably less time—than compared to a phone line.

**SHARP**  
be sharp™

**SHARP ELECTRONICS CORPORATION**  
Network Office Systems Group  
Sharp Plaza, Mahwah, NJ 07430-1163  
1-800-BE-SHARP • www.sharppusa.com



As an ENERGY STAR® Partner, SHARP has determined that this product meets the ENERGY STAR® guidelines for energy efficiency.

**General**

<b>Type:</b>	Console
<b>Copy system:</b>	Dry, electrostatic transfer system
<b>Paper size:</b>	Max. 11" x 17" / Min. 5.5" x 8.5"
<b>Paper capacity:</b>	500 sheets, expandable up to 3100 sheets with options
<b>Copy/print speed (max):</b>	28 cpm/ppm (8.5" x 11")
<b>Memory:</b>	64MB, upgradable to 320MB with options, 5GB HDD
<b>Warm-up time<sup>1</sup>:</b>	Less than 80 seconds
<b>First copy time:</b>	4.6 seconds (8.5" x 11", 1st paper tray, fast platen mode)
<b>Power requirements:</b>	Rated local AC voltage ± 10%, 50/60 Hz
<b>Power consumption:</b>	Max. 1.6 kW
<b>Dimensions (WxDxH)<sup>2</sup>:</b>	32 17/32" x 26 31/32" x 43 15/16"
<b>Weight<sup>3</sup>:</b>	215 lbs.
<b>Account codes:</b>	100

**Printer**

<b>Resolution:</b>	600 dpi, 1200 dpi equivalent with smoothing technology
<b>Interface:</b>	IEEE 1284 parallel port
<b>Printer drivers:</b>	Windows® 95/98/Me, Windows NT® 4.0, Windows® 2000, Macintosh System 8.5.1-9x
<b>PDL (emulation):</b>	PCL5e, PCL6, PostScript Level 3 (option)
<b>Available fonts:</b>	45 fonts for HP PCL, 136 fonts for PS (with optional AR-PK1)
<b>Other features:</b>	Paper/output tray selection, duplex print, watermarks, pamphlet style, staple (3 patterns), job retention for confidential/sample print, N-up, B&W reverse, mirror image, form overlay, fit to page, auto configuration, easy print (stores settings), confidential print, sample print. Note: some features are not available according to the printer driver used.

**Network Scanning** (optional AR-NS2 Network Scanner Expansion Kit required)

<b>Resolution:</b>	200, 300, 600 dpi
<b>Compatibility:</b>	TWAIN compliant (push out method)
<b>Sharpdesk licenses:</b>	10-user licenses included

**Print Server Card** (standard)

<b>Hardware interface:</b>	10Base-T, 100Base-TX
<b>Support platforms:</b>	UNIX, Windows 95/98/Me, Windows NT 4.0, Windows 2000, Novell Netware 3.x/4.x (IntranetWare)/Netware5, Macintosh System 8.5.1-9.x
<b>Network protocols:</b>	IPX/SPX for Novell environments, TCP/IP for Windows and UNIX environments, EtherTalk for Macintosh environments
<b>Printing protocols:</b>	Novell Printserver Application w/ NCS and Bindery, Printer resident LPD (includes reaction to LPQ request), TCP FTP for downloading of print files, EtherTalk printing, IPP, NetBEUI for Windows

**Copier**

<b>Original size:</b>	Max. 11" x 17"
<b>Continuous copy:</b>	Max. 999 copies
<b>Resolution copy:</b>	600 dpi
<b>Zoom range:</b>	From 25 to 400% with 8 preset ratios (4 reduction + 4 enlargement). From 25 to 200% when equipped with DSPF
<b>Other features:</b>	Auto paper selection, auto magnification selection, paper type selection (by type setting), auto tray switching, E-Sort, rotation copy, reserved copy, pre-heat/auto power shut-off modes, copy auditing (100 accounts), margin shift, edge/centre erase, dual page copy mode, multi-shot copy (N in 1), booklet copy

**Fax Option**

<b>Transmission time<sup>4</sup>:</b>	2 seconds (Super G3); 6 seconds (G3)
<b>Compression method:</b>	MH, MR, MMR, JBIG
<b>Modem speed:</b>	33.6Kbps/2.4Kbps automatic fallback
<b>Intercommunication:</b>	Super G3, G3
<b>Communication line:</b>	PSTN, PBX
<b># of support lines:</b>	1
<b>Image quality:</b>	256 grayscale levels
<b>Exposure adjustment:</b>	Dark/Auto/Light
<b>Resolution settings:</b>	Normal/Small Letter/Fine/Extra Fine
<b>One touch dial keys:</b>	500 (e-mail addresses included)

Design and specifications are subject to change without notice.

Sharp is a registered trademark of Sharp Corporation.

All other trademarks and registered trademarks are the property of their respective holders.

<sup>1</sup>At rated voltage, 20° c (68°f), 65% RH.

<sup>2</sup>Dimensions and weight include scanner rack and stand.

<sup>3</sup>With ITU-T No.1 chart standard resolution, SUPER G3 mode, 33,600 bps, JBIG compression.